



ELMWOOD DISTRIBUTION CENTER FOR LEASE

1000 ELMWOOD PARK BOULEVARD | JEFFERSON, LA



BUILDING AREA

75,793 sq. ft. of dock height tilt-up construction distribution space

OFFICE/SHOWROOM AREA

22,673 sq. ft. on two floors

LAND AREA

Approximately 13.5 acres of land area with approx. 2.5 acres on the north side (available for additional rental).

EAVE HEIGHT

30' clear

SPRINKLERS

The building is fully sprinklered

LOADING

Dock height via 12 doors, 8 van height doors and one ramp to ground level

ZONING

M-2 (Light Industrial)

LEASE RATE

\$6.75 per square foot on a net lease basis

Max J. Derbes, Inc.
REALTORS ■

CONTACT

GERARD E. HENRY, SIOR

OFFICE 504.733.4555
gerard@maxderbes.com

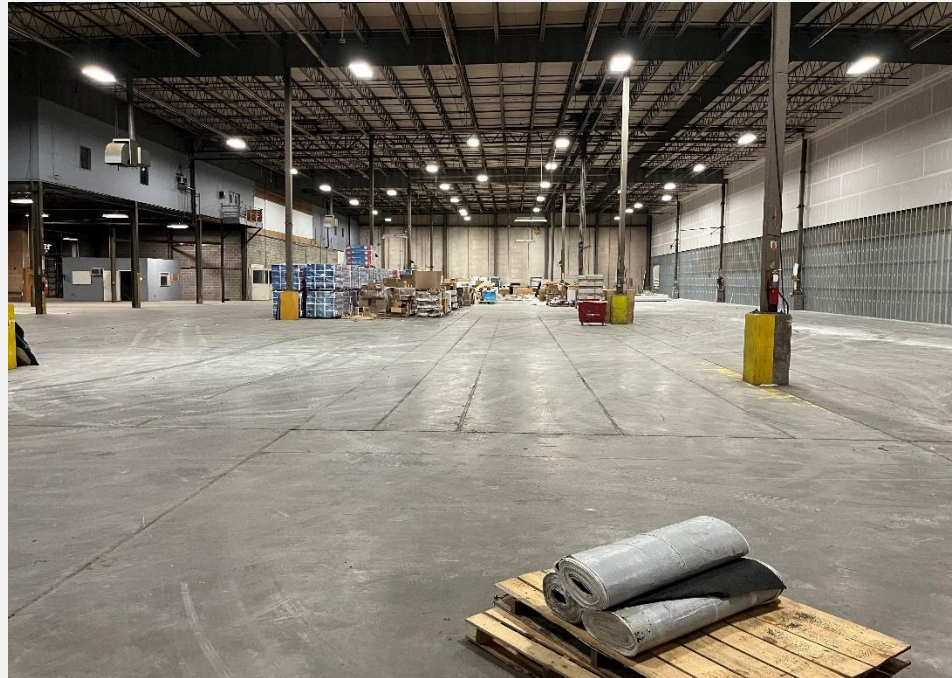
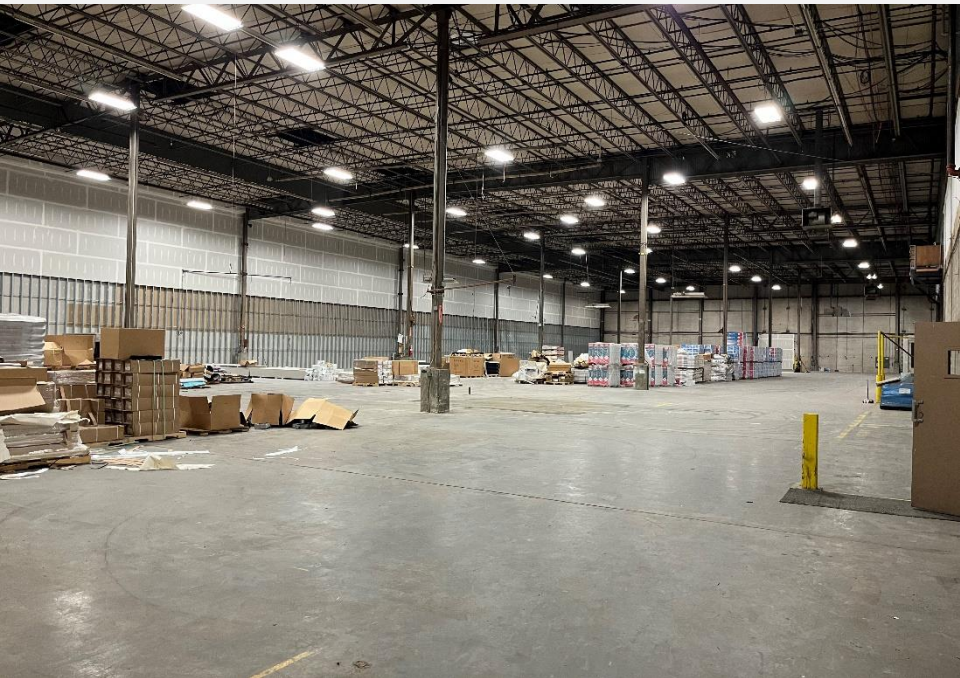
Max J. Derbes, Inc.
5440 Mounes Street, Ste 100
New Orleans, LA 70123





ELMWOOD DISTRIBUTION CENTER FOR LEASE

1000 ELMWOOD PARK BOULEVARD | JEFFERSON, LA



Max J. Derbes, Inc.
REALTORS ■

CONTACT
GERARD E. HENRY, SIOR

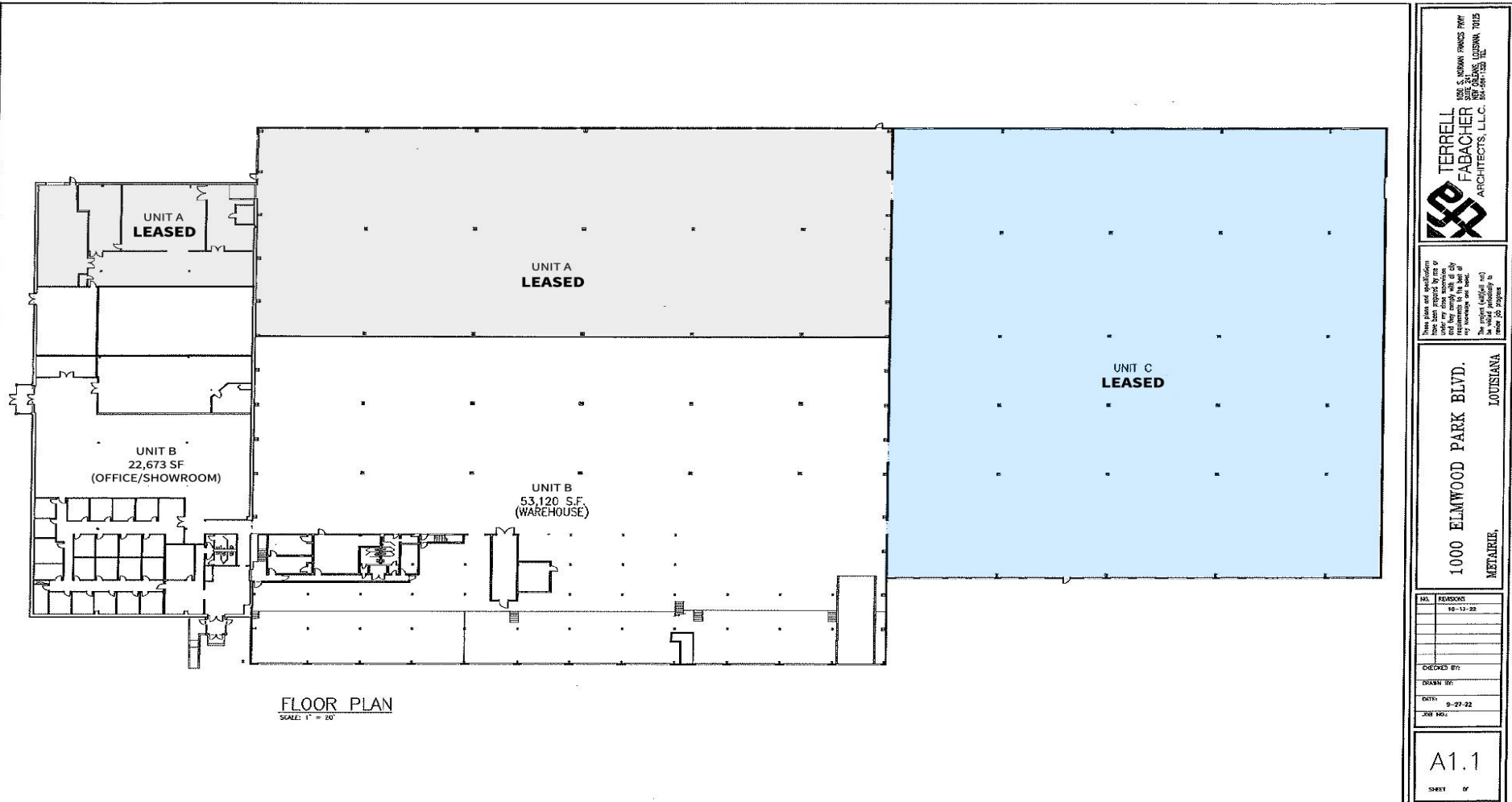
OFFICE 504.733.4555
gerard@maxderbes.com

Max J. Derbes, Inc.
5440 Mounes Street, Ste 100
New Orleans, LA 70123



ELMWOOD DISTRIBUTION CENTER FOR LEASE

1000 ELMWOOD PARK BOULEVARD | JEFFERSON, LA



Max J. Derbes, Inc.
REALTORS ■

CONTACT
GERARD E. HENRY, SIOR

OFFICE 504.733.4555
gerard@maxderbes.com

Max J. Derbes, Inc.
5440 Mounes Street, Ste 100
New Orleans, LA 70123

